



The Rosewood II

4 Bedrooms | 3.5 Bathrooms | Study | 2,589 sqft

The Rosewood II offers possibilities for a multi-generational home or private guest accommodations with dual master suites, one on each floor. A spacious foyer and study welcome you into the main living space flowing from the dining area into the living room and kitchen with breakfast bar. Quietly tucked at the back of the home is one of two master suites with a generously sized bedroom, walk-in closet and a full en-suite bathroom with double vanity. A powder room and large mudroom with access to the attached two-car garage complete the first floor. On the second floor, an even larger master bedroom offers a walk-in closet and four piece en-suite bath. Additionally there are another two bedrooms, a full bath and roomy laundry room on the second floor.

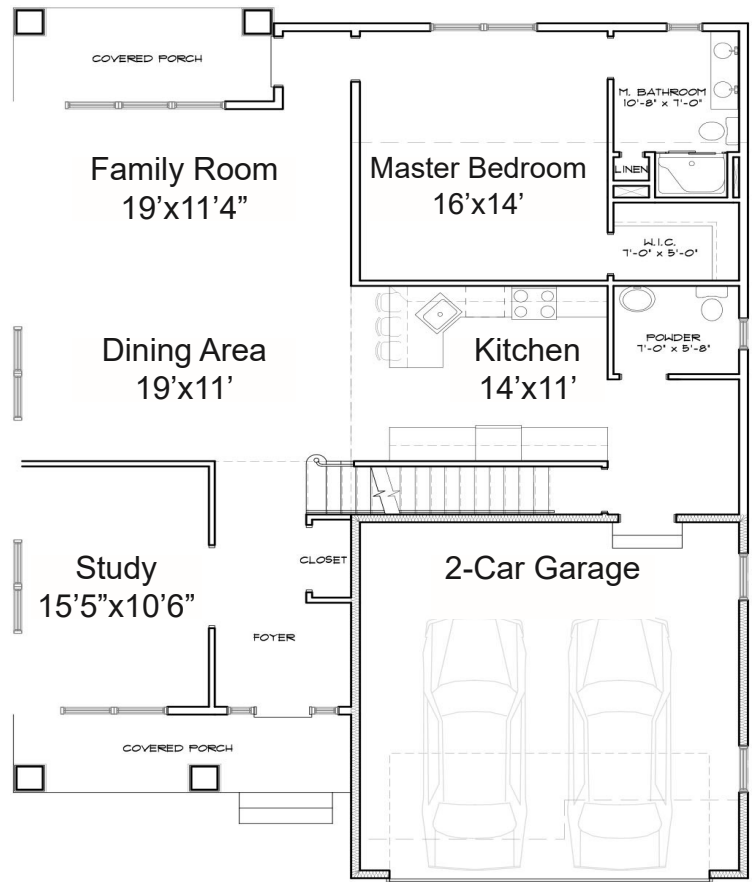
**BEAVER POND
VILLAGE**

For more information contact:
Michelle DeCoteau
Licensed Real Estate Salesperson
(518) 584 - 9900

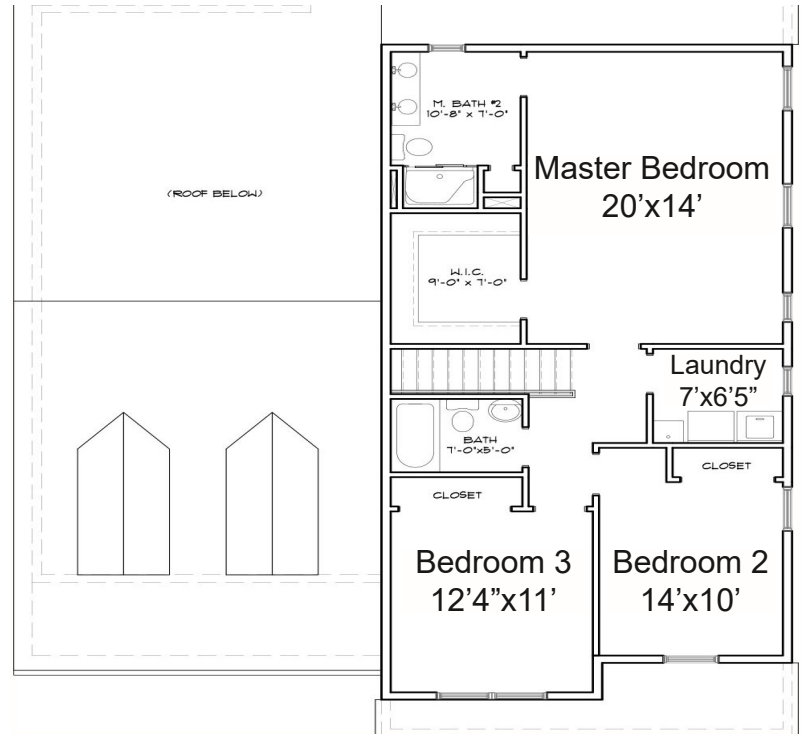
The Rosewood II

4 Bedrooms
3.5 Bathrooms
2,589 sqft

First Floor



Second Floor



Additional options may be shown that are not included in the base price. Please check with the representative.
 "All dimensions are approximate and subject to change. We reserve the right to change elevations, specifications, material and prices without prior notice. Plans show optional items. Renderings are artist conceptions." Revised 02/17/2018.



The Scott Varley Team
We Don't Sell Houses: We Sell Homes.
 ScottVarley.com

