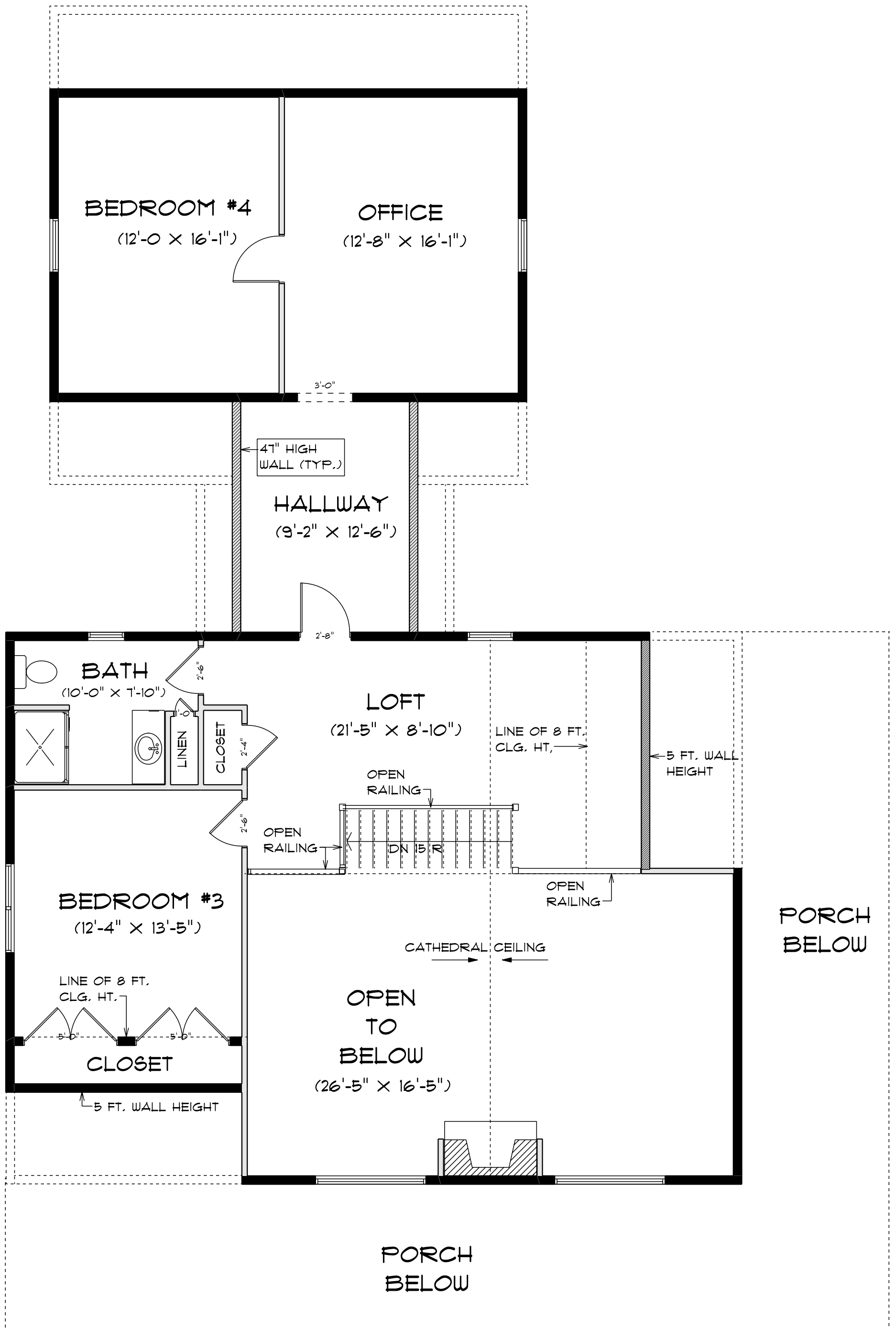


FIRST FLOOR PLAN

FIRST FLOOR PLAN= 1318.4 SQ. FT.
 SECOND FLOORPLAN = 582.2 SQ. FT.
 TOTAL SQ. FOOTAGE= 1,900.6 SQ. FT.



SECOND FLOOR PLAN

FIRST FLOOR PLAN =	1318.4 SQ. FT.
SECOND FLOOR PLAN =	1,149 SQ. FT.
LOWER LEVEL =	1,052 SQ. FT.
TOTAL SQ. FOOTAGE =	3,519.4 SQ. FT.